

Human TSLP Protein

Cat. No. TSP-HM201



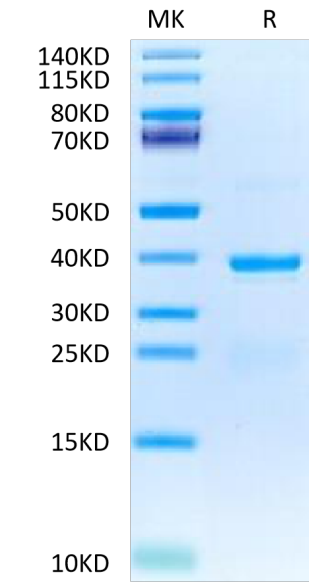
Description	
Source	Recombinant Human TSLP Protein is expressed from HEK293 with hFc tag at the C-Terminus. It contains Tyr29-Gln159.
Accession	Q969D9-1
Molecular Weight	The protein has a predicted MW of 41.69 kDa. Due to furin cleavage site, the protein migrates to 38-42 kDa based on Bis-Tris PAGE result.
Endotoxin	Less than 1 EU per µg by the LAL method.
Purity	> 95% as determined by Bis-Tris PAGE > 95% as determined by HPLC

Formulation and Storage	
Formulation	Lyophilized from 0.22 µm filtered solution in PBS (pH 7.4). Normally 8% trehalose is added as protectant before lyophilization.
Reconstitution	Dissolve the lyophilized protein in distilled water. Please refer to the Certificate of Analysis for detailed instructions.
Storage	-20 to -80°C for 12 months as supplied from date of receipt. -80°C for 3 months after reconstitution. Recommend to aliquot the protein into smaller quantities for optimal storage. Please minimize freeze-thaw cycles.

Background	
Thymic Stromal Lymphopoietin (TSLP) was originally identified as an activity from the conditioned medium of a mouse thymic stromal cell line that promoted the development of B cells. Cytokine that induces the release of T-cell-attracting chemokines from monocytes and, in particular, enhances the maturation of CD11c dendritic cells. Can induce allergic inflammation by directly activating mast cells.	

Assay Data

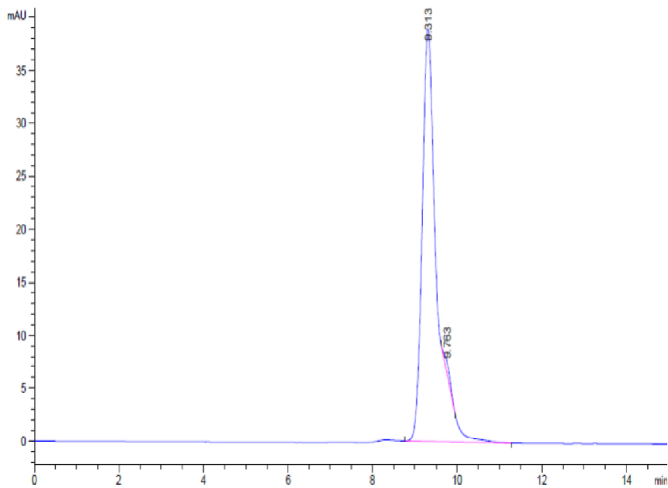
Bis-Tris PAGE



Human TSLP on Bis-Tris PAGE under reduced condition. The purity is greater than 95%.

SEC-HPLC

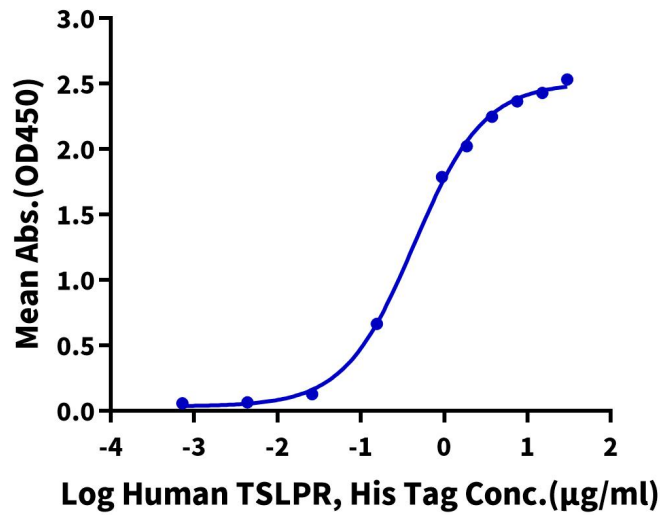
Assay Data



The purity of Human TSLP is greater than 95% as determined by SEC-HPLC.

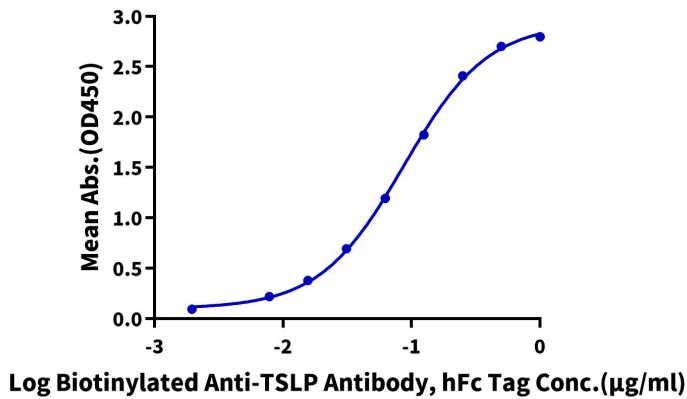
ELISA Data

Human TSLP, hFc Tag ELISA
0.5µg Human TSLP, hFc Tag Per Well



Immobilized Human TSLP, hFc Tag at 5 µg/ml (100 µl/well) on the plate. Dose response curve for Human TSLPR, His Tag with the EC50 of 0.44 µg/ml determined by ELISA (QC Test).

Human TSLP, hFc Tag ELISA
0.2µg Human TSLP, hFc Tag Per Well



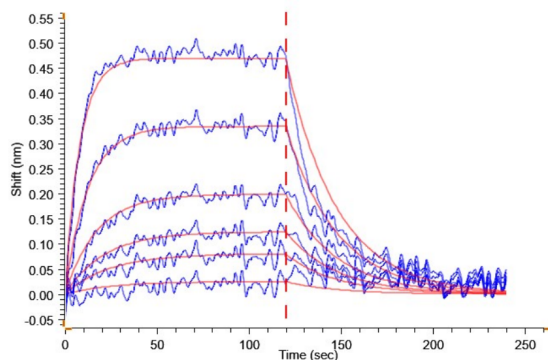
Immobilized Human TSLP, hFc Tag at 2 µg/ml (100 µl/Well) on the plate. Dose response curve for Biotinylated Anti-TSLP Antibody, hFc Tag with the EC50 of 87.0 ng/ml determined by ELISA.

BLI Data

Human TSLP Protein

Cat. No. TSP-HM201

Assay Data



Loaded Human TSLP, hFc Tag on ProA-Biosensor can bind Human TSLPR, His Tag with an affinity constant of 82.50 nM as determined in BLI assay (Gator® Prime).